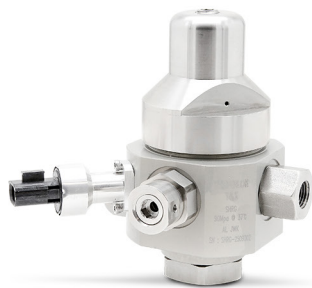
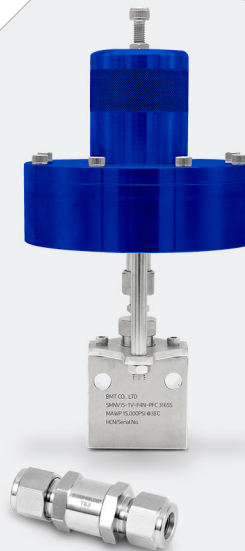


High Pressure Manifold Check Valves

• SMFCV Series

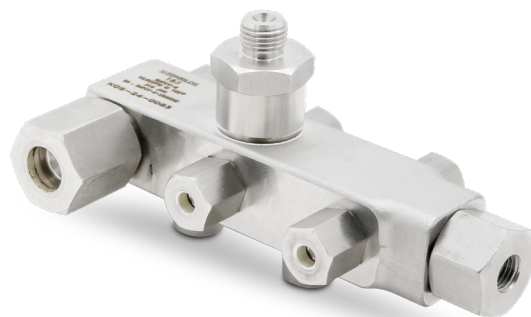


High Pressure Manifold Check Valves

SMFCV Series

Features

- Integrated compact design (option : pressure sensor).
- 4 or 6 ports available.
- Panel mountable.
- Variety of end connections.
- Each and every valve is tested at the factory.



Specifications

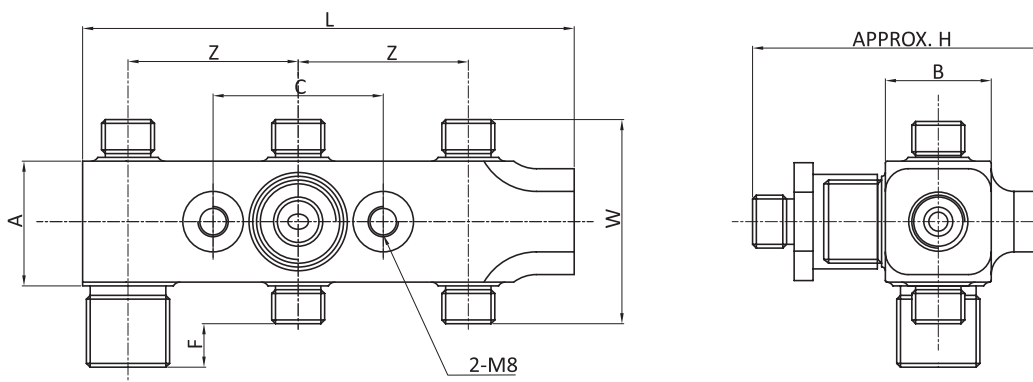
- Pressure rating : 12,000 psig (827bar) @70F°(21C°).
- Temperature rating : -49 to 194°F (-45 to 90°C).
- Body material : A182 F316
- Port connections : Port - ISO 13296, Sensor - SAE J1926 9/16 UNF-2B
- Flow coefficient (Cv) : 0.21
- Cracking pressure range : up to 21.7 psi (1.5 bar)

Testing

- Each valve is tested with nitrogen at 12,000 psig (827bar) to maximum allowable leak rate of 0.1 SCCM.

Table of Dimensions

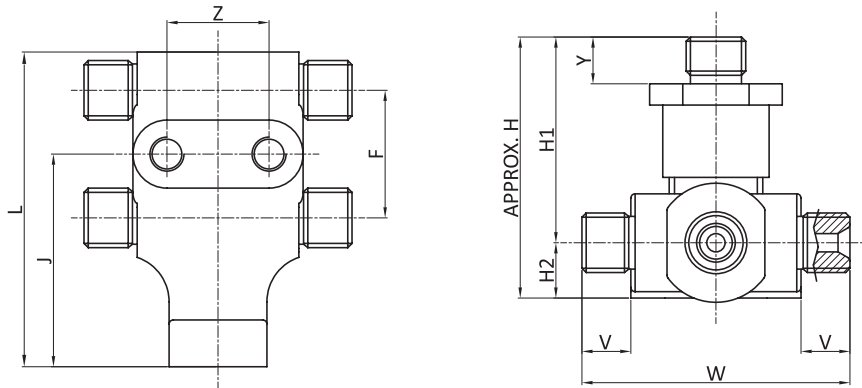
6-Port



Description	Connection	L	W	F	Z	C	A	B	H
Manifold Check Valve	14M, 22M	130	54	11.5	45	45	32	28	77.12

- Dimensions and Drawings are for reference only and are subject to change without prior notice.
- Unless otherwise specified, all dimensions are in millimeters.
- Sizes, pressure classes, and end connections not listed are available upon request.
- Dimensions shown with nuts finger-tight, where applicable.

4-Port



Description	Connection	L	F	Z	J	Y	V	W	H1	H2	H
Manifold Check Valve	14M	74	30	24	50	11	11.5	63	48.5	13	62

Ordering Information

Example :

SMFCV	-	6
<u>1</u>		<u>2</u>

1. Valve Series

- SMFCV

2. Number of Port

- 4 = 4 Port
- 6 = 6 Port

BMT Co., Ltd.

Headquarters

(46031) 부산시 기장군 장안읍 신소재산단2로 17 (반룡리)

17, Sinsojaesandan 2-ro, Jangan-eup, Gijang-gun, Busan, 46031 South Korea

TEL: +82 51 780 5000 FAX: +82 51 780 5100

E-mail: superlok@superlok.com

WEB: www.superlok.com

Fittings & Valves

Industrial

Instrumentation Tube Fittings

i-Fitting®

Ball/Plug Valves

Double Block & Bleed Valves

Manifold/Gauge Valves

Globe/Needle Valves

Cryogenic Valves

Check/Relief/Excess Flow Valves

Medium/High Pressure Fittings & Valves

Eco-fuel Conversion and Supply Units

Ultra High Purity

HGB® (High-integrated Gas Box)

HGS® (High-integrated Gas System)

Weld & Metal Face Seal Fittings

Bend Fittings

Diaphragm Valves

Bellows Valves

Check Valves

Clean Ball Valves

Regulators

Gas Filters

HGB® : Trademark registered in Republic of Korea, Japan and United States (as of August 2025)

HGS® : Trademark registered in Republic of Korea, Japan and United States (as of May 2025)

Electric & Energy

Metal Clad Switchgear (MCSG)

Compact Switchboard

Motor Control Center (MCC)

Smart Distribution Board

Energy Management System (EMS)