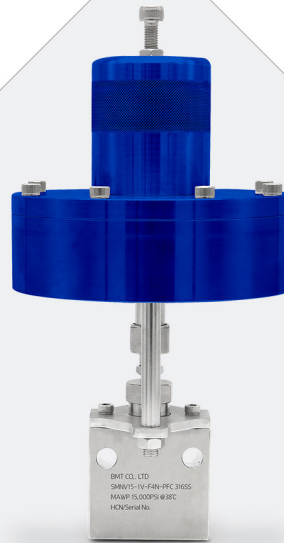


High Pressure Relief Valves

• SHR60 Series



High Pressure Relief Valves

SHRV60 Series 60,000 psi

Features

- Metal seat relief valves.
- Set pressure : 3,000 to 60,000psig (206.8 to 4136.8 bar).
- Working temperature : -110°F (-79°C) to 500°F (260°C).
- Liquid or gas service. Provide shut-off of liquids and gases under pressure to commercial tightness standards.
- Pressure settings are made at the factory and valves are tagged accordingly.
- Lock wired secure cap to maintain set pressure.
- Easily exchangeable seat.



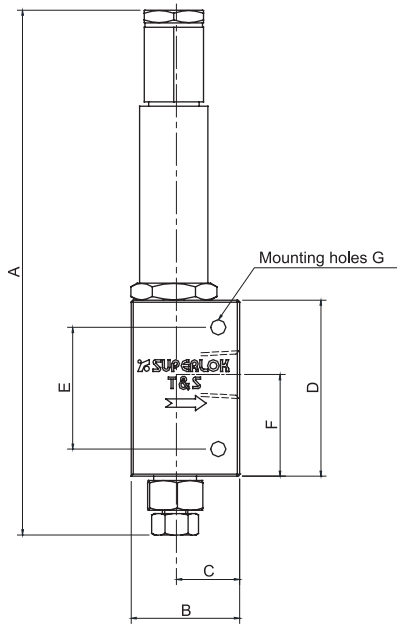
Technical Data

Grade	Inlet		Outlet Connection Type	Orifice Size, In. (mm)	Cv	Pressure Rating, psig (bar) @ 100°F (38 °C)		
	Tube OD	Connection Type				Minimum Set Pressure	Maximum Set Pressure	Maximum Back Pressure
5A	3/8"	HP6	F.NPT 3/4"	0.125 (3.18)	0.2	20,000 (1378.9)	30,000 (2068.4)	500 (34.5)
6A				0.093 (2.36)	0.1	25,000 (1723.7)	45,000 (3102.6)	
7A				0.078 (1.98)	0.07	30,000 (2068.4)	60,000 (4136.8)	

* Maximum system operation pressure should not exceed 90% of relief valve set pressure.

- Dimensions and Drawings are for reference only and are subject to change without prior notice.
- Unless otherwise specified, all dimensions are in millimeters.
- Sizes, pressure classes, and end connections not listed are available upon request.
- Dimensions shown with nuts finger-tight, where applicable.

Table of Dimensions



Dimensions, in. (mm)							
Part No.	A	B	C	D	E	F	G
SHRV60-HP6-F12N	9.46 (240.4)	2 (50.8)	1.19 (30.2)	3.25 (82.6)	2.25 (57.1)	1.94 (49.3)	0.28 (7.1)

• All dimensions are for reference only, subject to change.

Ordering Information

Example :	SHRV60 - HP6 - F12N - 3A		
	1	2	3

*316 Stainless Steel is Standard Body Material

1. Inlet Tube O.D

□ **HP6** = High Pressure 3/8"

2. Outlet Connection Size

□ **F12N** = Female 3/4" NPT

3. Grade (Set Pressure)

5A	20,000 ~ 30,000 psig
6A	25,000 ~ 45,000 psig
7A	30,000 ~ 60,000 psig



BMT Co., Ltd.

| Head Quarter & 1st Factory

(50568) 경상남도 양산시 산막공단남11길 35 (북정동)

35, Sanmakgongdannam 11-gil, Yangsan-si, Gyeongsangnam-do, 50568, South Korea

TEL: +82 55 783 1000 FAX: +82 55 783 1111

E-mail: superlok@superlok.com

| 2nd Factory

(50568) 경상남도 양산시 산막공단남8길 29 (호계동)

29, Sanmakgongdannam 8-gil, Yangsan-si, Gyeongsangnam-do, 50568, South Korea

Fittings & Valves

INDUSTRIAL

Instrumentation Tube Fittings

i-Fitting®

Ball/Plug Valves

Double Block & Bleed Valves

Manifold/Gauge Valves

Globe/Needle Valves

Cryogenic Valves

Check/Relief/Excess Flow Valves

Medium/High Pressure Fittings & Valves

ULTRA HIGH PURITY

Weld & Metal Face Seal Fittings

Bend Fittings

Diaphragm Valves

Bellows Valves

Check Valves

Clean Ball Valves

Regulators

Electric & Energy

PRODUCT & SOLUTION

Metal Clad Switchgear (MCSG)

Compact Switchboard

Motor Control Center (MCC)

Smart Distribution Board

Energy Management System (EMS)

COMPONENTS (BMT PATENTED)

MCBS (Molded Case Busbar System)

MCPD (Molded Case Power Distributor)

Smart-eye (AC/DC Meter)