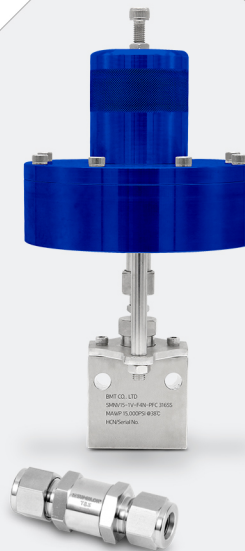


High Pressure Valves Series

- High Pressure Needle Valves
- High Pressure Check Valves
- High Pressure Relief Valves



High Pressure Needle Valves

SHNV30/40/60 Series up to 60,000 psi (4,140 bar)

Features

- Pressures up to 60,000 psi (4,140 bar)
- Non-rotating stem tips.
- Available sizes : 1/4", 3/8", 9/16", 1".
- 316 stainless steel high tensile bodies.
- Choice of VEE or Regulating stem tip.
- Packing set consists of multiple Teflon packing with nylon back up.



Specifications

- Maximum Working Pressure rating: 60,000psig (4,140bar) @72 F°(22 C°)
- Temperature rating: 0 to 450 F°(-17.8 to 232 C°) with Teflon packing and up to 1200 F°(648 C°) with optional grafoil packing.

Technical Data

Valve Flow Coefficient

Tube O.D	Connection	Orifice, In. (mm)	*Cv	Pressure / Temperature Rating @72 F°(22 C°)
1/4"	HP4	0.094 (2.39)	0.12	30,000 psi (2,070 bar)
3/8"	HP6	0.125 (3.18)	0.23	30,000 psi (2,070 bar)
9/16"	HP9	0.187 (4.74)	1.33	30,000 psi (2,070 bar)
1"	HP16	0.438 (11.12)	2.80	30,000 psi (2,070 bar)

*Cv values listed are for 2-way straight pattern valves. For 2-way angle pattern valves, increase Cv value by 50%.

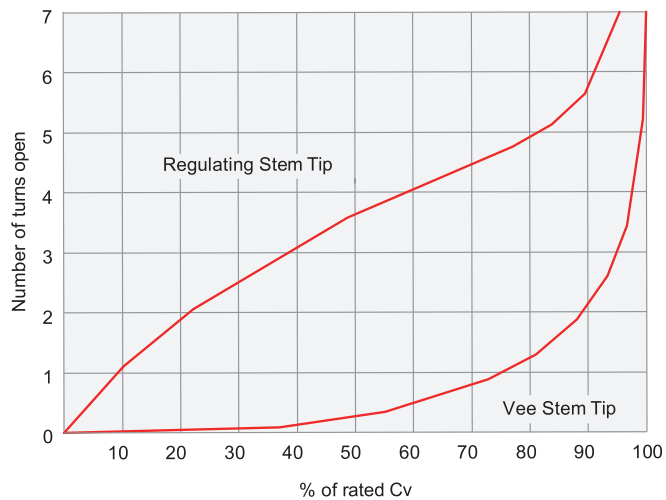
Valve Flow Coefficient

Tube O.D	Connection	Orifice, In. (mm)	*Cv	Pressure / Temperature Rating @72 F°(22 C°)
9/16"	HP9	0.109 (2.76)	0.28	40,000 psi (2,760 bar)
1/4"	HP4	0.062 (1.57)	0.08	60,000 psi (4,140 bar)
3/8"	HP6	0.062 (1.57)	0.09	60,000 psi (4,140 bar)
9/16"	HP9	0.078 (1.98)	0.14	60,000 psi (4,140 bar)

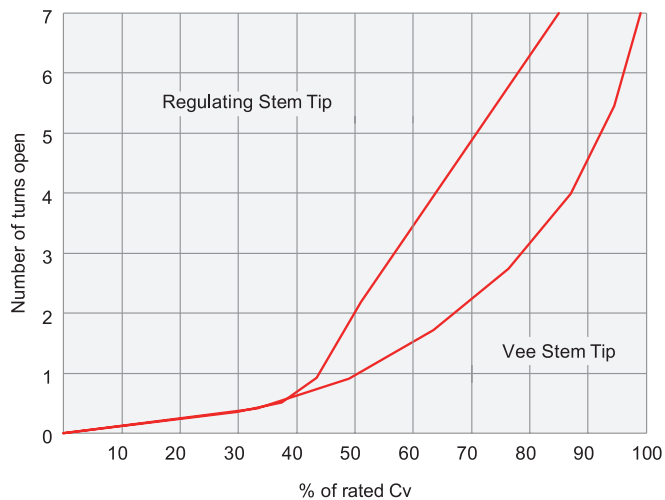
*Cv values listed are for 2-way straight pattern valves. For 2-way angle pattern valves, increase Cv value by 50%.

Technical Data

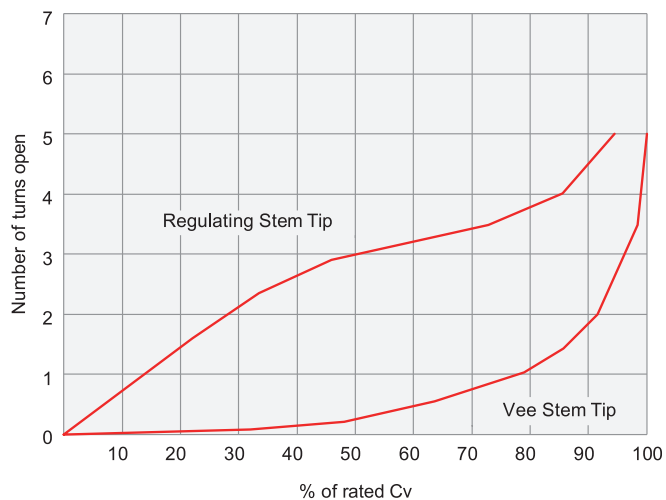
Coefficient Curves (Cv) 30,000psi - 1/4", 3/8", 9/16"



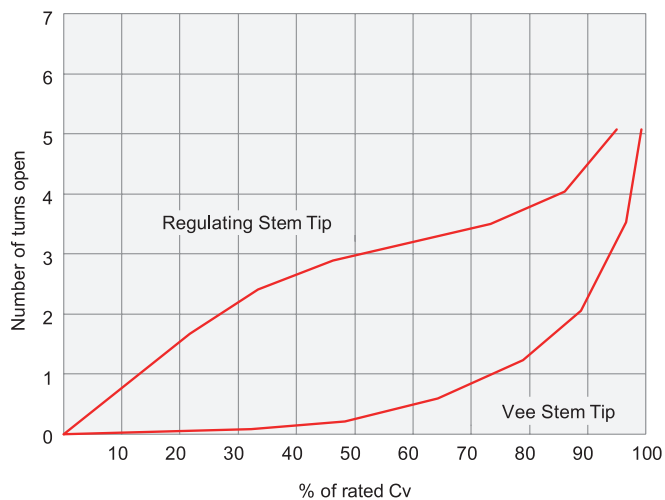
Coefficient Curves (Cv) 30,000psi - 1"



Coefficient Curves (Cv) 40,000psi - 9/16"



Coefficient Curves (Cv) 60,000psi - 1/4", 3/8", 9/16"



Ordering Information

Example :	SHNV30	-	1V	-	HP4	-	GR
	1		2 3		4		5

*316 Stainless Steel is Standard Body Material

1. Valve Series

- SHNV30 = 30,000 psi valve
- SHNV40 = 40,000 psi valve
- SHNV60 = 60,000 psi valve

4. Connection Size & Type

Size (inch)	1/4	3/8	9/16	1
High Pressure C&T	HP4	HP6	HP9	HP16

2. Body Pattern

- 1 = 2-way straight
- 2 = 2-way angle
- 3 = 3-way, two pressure connections
- 4 = 3-way, one pressure connection
- 5 = 3-way, two stem connection valve
- 6 = Replaceable seat valve

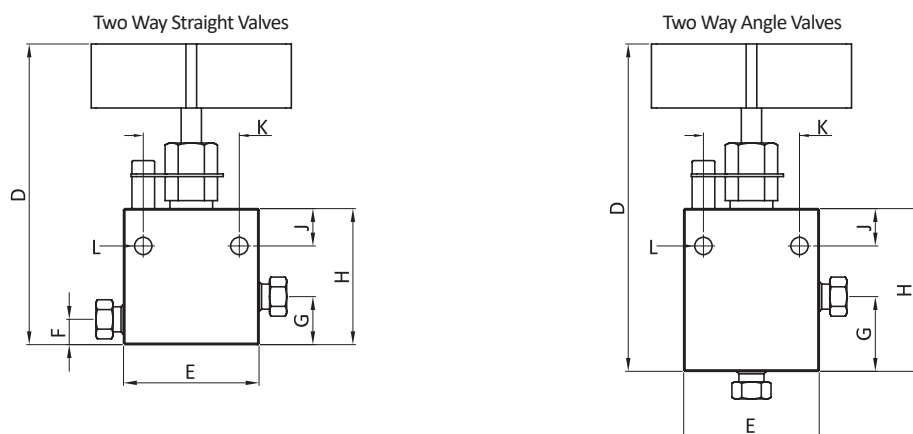
5. Packing Material

- (Blank) = PTFE (Standard)
- GR = Grafoil

3. Stem Type

- V = Vee stem
- R = Regulating stem

Table of Dimensions



Two Way Straight Valves

Part No.	Tube OD, in.(mm)	Orifice, in.(mm)	Dimensions, in. (mm)								Thickness, in.(mm)
			D	E	F	G	H	J	K	L	
SHNV30-1V-HP4	1/4 (6.35)	0.094 (2.39)	4.62 (117.35)	2.00 (50.80)	0.50 (12.70)	0.88 (22.35)	2.00 (50.80)	0.38 (9.65)	1.38 (35.05)	0.22 (5.59)	1.00 (25.40)
SHNV30-1V-HP6	3/8 (9.53)	0.125 (3.18)	4.68 (118.87)	2.00 (50.80)	0.50 (12.70)	0.88 (22.35)	2.00 (50.80)	0.38 (9.65)	1.38 (35.05)	0.22 (5.59)	1.00 (25.40)
SHNV30-1V-HP9	9/16 (14.29)	0.187 (4.74)	5.06 (128.52)	2.62 (66.55)	0.88 (22.35)	1.32 (33.52)	2.44 (61.98)	0.38 (9.65)	1.38 (35.05)	0.28 (7.11)	1.50 (38.10)
SHNV30-1V-HP16	1 (25.4)	0.438 (11.13)	8.42 (213.86)	4.13 (104.90)	0.94 (23.87)	1.69 (42.92)	4.44 (112.77)	1.12 (28.44)	2.50 (63.50)	0.56 (14.22)	1.75 (44.45)
SHNV40-1V-HP9	9/16 (14.29)	0.109 (2.76)	5.06 (128.52)	2.62 (66.55)	0.75 (19.05)	1.19 (30.22)	2.50 (63.50)	0.38 (9.65)	1.38 (35.05)	0.28 (7.11)	1.50 (38.10)
SHNV60-1V-HP4	1/4 (6.35)	0.062 (1.57)	4.75 (120.65)	2.00 (50.80)	0.43 (10.92)	0.81 (20.57)	2.12 (53.85)	0.38 (9.65)	1.38 (35.05)	0.22 (5.59)	1.00 (25.40)
SHNV60-1V-HP6	3/8 (9.53)	0.062 (1.57)	4.87 (123.70)	2.00 (50.80)	0.56 (14.22)	0.94 (23.87)	2.25 (57.15)	0.38 (9.65)	1.38 (35.05)	0.22 (5.59)	1.00 (25.40)
SHNV60-1V-HP9	9/16 (14.29)	0.078 (1.98)	5.13 (130.30)	2.62 (66.55)	0.75 (19.05)	1.19 (30.22)	2.50 (63.50)	0.38 (9.65)	1.38 (35.05)	0.28 (7.11)	1.50 (38.10)

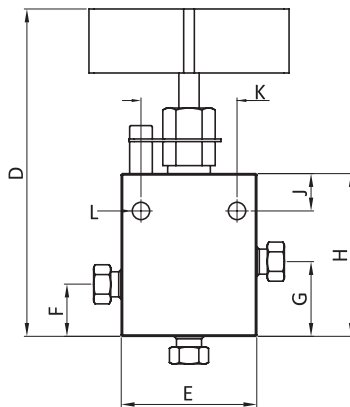
Two Way Angle Valves

Part No.	Tube OD, in.(mm)	Orifice, in.(mm)	Dimensions, in. (mm)							Thickness, in.(mm)
			D	E	G	H	J	K	L	
SHNV30-2V-HP4	1/4 (6.35)	0.094 (2.39)	4.62 (117.35)	2.00 (50.80)	0.88 (22.35)	2.00 (50.80)	0.38 (9.65)	1.38 (35.05)	0.22 (5.59)	1.00 (25.40)
SHNV30-2V-HP6	3/8 (9.53)	0.125 (3.18)	4.74 (120.40)	2.00 (50.80)	1.00 (25.40)	2.12 (53.85)	0.38 (9.65)	1.38 (35.05)	0.22 (5.59)	1.00 (25.40)
SHNV30-2V-HP9	9/16 (14.29)	0.187 (4.74)	5.06 (128.52)	2.62 (66.55)	1.32 (33.52)	2.44 (61.98)	0.38 (9.65)	1.38 (35.05)	0.28 (7.11)	1.50 (38.10)
SHNV30-2V-HP16	1 (25.4)	0.438 (11.13)	9.35 (237.49)	4.13 (104.90)	2.37 (60.20)	5.12 (130.04)	1.12 (28.44)	2.50 (63.50)	0.56 (14.22)	1.75 (44.45)
SHNV40-2V-HP9	9/16 (14.29)	0.109 (2.76)	5.37 (136.40)	2.62 (66.55)	1.50 (38.10)	2.81 (71.37)	0.38 (9.65)	1.38 (35.05)	0.28 (7.11)	1.50 (38.10)
SHNV60-2V-HP4	1/4 (6.35)	0.062 (1.57)	5.00 (127.00)	2.00 (50.80)	1.07 (27.17)	2.38 (60.45)	0.38 (9.65)	1.38 (35.05)	0.22 (5.59)	1.00 (25.40)
SHNV60-2V-HP6	3/8 (9.53)	0.062 (1.57)	5.25 (133.35)	2.00 (50.80)	1.31 (33.27)	2.62 (66.55)	0.38 (9.65)	1.38 (35.05)	0.22 (5.59)	1.00 (25.40)
SHNV60-2V-HP9	9/16 (14.29)	0.078 (1.98)	5.44 (138.18)	2.62 (66.55)	1.50 (38.10)	2.81 (71.37)	0.38 (9.65)	1.38 (35.05)	0.28 (7.11)	1.50 (38.10)

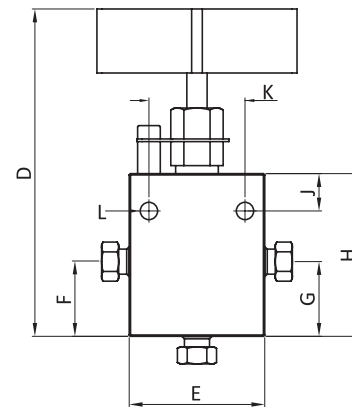
- Dimensions and Drawings are for reference only and are subject to change without prior notice.
- Unless otherwise specified, all dimensions are in millimeters.
- Sizes, pressure classes, and end connections not listed are available upon request.
- Dimensions shown with nuts finger-tight, where applicable.

Table of Dimensions

Three Way Valves / Two Pressure Connections



Three Way Valves / One Pressure Connection



Three Way Valves / Two Pressure Connections

Part No.	Tube OD, in.(mm)	Orifice, in.(mm)	Dimensions, in.(mm)								Thickness, in.(mm)
			D	E	F	G	H	J	K	L	
SHNV30-3V-HP4	1/4 (6.35)	0.094 (2.39)	4.74 (120.40)	2.00 (50.80)	0.62 (15.74)	1.00 (25.40)	2.12 (53.85)	0.38 (9.65)	1.38 (35.05)	0.22 (5.59)	1.00 (25.40)
SHNV30-3V-HP6	3/8 (9.53)	0.125 (3.18)	5.12 (130.05)	2.00 (50.80)	1.00 (25.40)	1.38 (35.05)	2.50 (63.50)	0.38 (9.65)	1.38 (35.05)	0.22 (5.59)	1.00 (25.40)
SHNV30-3V-HP9	9/16 (14.29)	0.187 (4.74)	5.49 (139.45)	2.62 (66.55)	1.32 (33.52)	1.76 (44.70)	2.88 (73.15)	0.38 (9.65)	1.38 (35.05)	0.28 (7.11)	1.50 (38.10)
SHNV30-3V-HP16	1 (25.4)	0.438 (11.13)	9.71 (246.63)	4.13 (104.90)	2.38 (60.45)	2.81 (71.37)	5.56 (141.22)	1.12 (28.44)	2.50 (63.50)	0.56 (14.22)	1.75 (44.45)
SHNV40-3V-HP9	9/16 (14.29)	0.109 (2.76)	6.06 (153.92)	2.62 (66.55)	1.43 (36.32)	1.88 (47.75)	3.31 (84.07)	0.38 (9.65)	1.38 (35.05)	0.28 (7.11)	1.50 (38.10)
SHNV60-3V-HP4	1/4 (6.35)	0.062 (1.57)	4.74 (120.40)	2.00 (50.80)	0.65 (17.52)	1.07 (27.17)	2.38 (60.45)	0.38 (9.65)	1.38 (35.05)	0.22 (5.59)	1.00 (25.40)
SHNV60-3V-HP6	3/8 (9.53)	0.062 (1.57)	4.87 (123.70)	2.00 (50.80)	1.06 (26.92)	1.44 (36.57)	2.75 (69.85)	0.38 (9.65)	1.38 (35.05)	0.22 (5.59)	1.00 (25.40)
SHNV60-3V-HP9	9/16 (14.29)	0.078 (1.98)	5.13 (130.30)	2.62 (66.55)	1.28 (32.51)	1.72 (43.68)	3.03 (76.96)	0.38 (9.65)	1.38 (35.05)	0.28 (7.11)	1.50 (38.10)

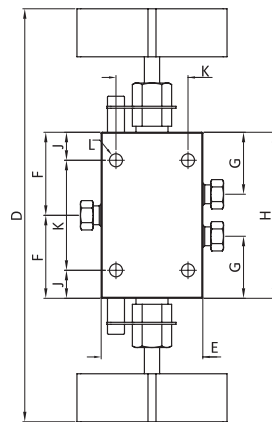
Three Way Valves / One Pressure Connection

Part No.	Tube OD, in.(mm)	Orifice, in.(mm)	Dimensions, in.(mm)								Thickness, in.(mm)
			D	E	F	G	H	J	K	L	
SHNV30-4V-HP4	1/4 (6.35)	0.094 (2.39)	4.62 (117.35)	2.00 (50.80)	0.88 (22.35)	0.88 (22.35)	2.00 (50.80)	0.38 (9.65)	1.38 (35.05)	0.22 (5.59)	1.00 (25.40)
SHNV30-4V-HP6	3/8 (9.53)	0.125 (3.18)	4.74 (120.40)	2.00 (50.80)	1.00 (25.40)	1.00 (25.40)	2.12 (53.85)	0.38 (9.65)	1.38 (35.05)	0.22 (5.59)	1.00 (25.40)
SHNV30-4V-HP9	9/16 (14.29)	0.187 (4.74)	5.12 (130.05)	2.62 (66.55)	1.32 (33.52)	1.32 (33.52)	2.44 (61.98)	0.38 (9.65)	1.38 (35.05)	0.28 (7.11)	1.50 (38.10)
SHNV30-4V-HP16	1 (25.4)	0.438 (11.13)	9.35 (237.49)	4.13 (104.90)	2.37 (60.20)	2.37 (60.20)	5.12 (130.04)	1.12 (28.44)	2.50 (63.50)	0.56 (14.22)	1.75 (44.45)
SHNV40-4V-HP9	9/16 (14.29)	0.109 (2.76)	5.37 (136.40)	2.62 (66.55)	1.50 (38.10)	1.50 (38.10)	2.81 (71.37)	0.38 (9.65)	1.38 (35.05)	0.28 (7.11)	1.50 (38.10)
SHNV60-4V-HP4	1/4 (6.35)	0.062 (1.57)	5.00 (127.00)	2.00 (50.80)	1.07 (27.17)	1.07 (27.17)	2.38 (60.45)	0.38 (9.65)	1.38 (35.05)	0.22 (5.59)	1.00 (25.40)
SHNV60-4V-HP6	3/8 (9.53)	0.062 (1.57)	5.25 (133.35)	2.00 (50.80)	1.31 (33.27)	1.31 (33.27)	2.62 (66.55)	0.38 (9.65)	1.38 (35.05)	0.22 (5.59)	1.00 (25.40)
SHNV60-4V-HP9	9/16 (14.29)	0.078 (1.98)	5.44 (138.18)	2.62 (66.55)	1.50 (38.10)	1.50 (38.10)	2.81 (71.37)	0.38 (9.65)	1.38 (35.05)	0.28 (7.11)	1.50 (38.10)

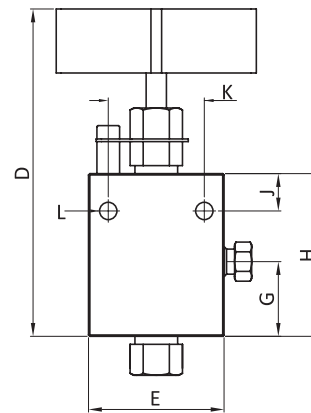
- Dimensions and Drawings are for reference only and are subject to change without prior notice.
- Unless otherwise specified, all dimensions are in millimeters.
- Sizes, pressure classes, and end connections not listed are available upon request.
- Dimensions shown with nuts finger-tight, where applicable.

Table of Dimensions

Three Way / Two Stem Connection Valves



Replaceable Seat Valves



Three Way / Two Stem Connection Valves

Part No.	Tube OD, in.(mm)	Orifice, in.(mm)	Dimensions, in.(mm)								Thickness, in.(mm)
			D	E	F	G	H	J	K	L	
SHNV30-5V-HP4	1/4 (6.35)	0.094 (2.39)	5.68 (144.27)	2.00 (50.80)	1.53 (38.86)	1.12 (28.45)	3.06 (77.72)	0.38 (9.65)	2.30 (58.42)	0.22 (5.59)	1.00 (25.40)
SHNV30-5V-HP6	3/8 (9.53)	0.125 (3.18)	5.87 (149.10)	2.00 (50.80)	1.62 (41.27)	1.12 (28.45)	3.25 (82.55)	0.38 (9.65)	2.49 (63.24)	0.22 (5.59)	1.00 (25.40)
SHNV30-5V-HP9	9/16 (14.29)	0.187 (4.74)	6.37 (161.80)	2.62 (66.55)	1.87 (47.62)	1.12 (28.45)	3.75 (95.25)	0.38 (9.65)	2.99 (75.94)	0.28 (7.11)	1.50 (38.10)
SHNV30-5V-HP16	1 (25.4)	0.438 (11.13)	11.81 (299.97)	4.13 (104.90)	3.87 (98.42)	2.75 (69.85)	7.75 (196.85)	1.12 (28.44)	5.51 (139.95)	0.56 (14.22)	1.75 (44.45)
SHNV40-5V-HP9	9/16 (14.29)	0.109 (2.76)	9.12 (231.65)	2.62 (66.55)	2.06 (52.32)	1.31 (33.27)	4.12 (104.65)	0.38 (9.65)	3.36 (85.34)	0.28 (7.11)	1.50 (38.10)
SHNV60-5V-HP4	1/4 (6.35)	0.062 (1.57)	6.07 (154.18)	2.00 (50.80)	1.72 (43.68)	1.31 (33.27)	3.44 (87.38)	0.38 (9.65)	2.68 (68.07)	0.22 (5.59)	1.00 (25.40)
SHNV60-5V-HP6	3/8 (9.53)	0.062 (1.57)	6.37 (161.80)	2.00 (50.80)	1.87 (47.62)	1.31 (33.27)	3.75 (95.25)	0.38 (9.65)	2.99 (75.94)	0.22 (5.59)	1.00 (25.40)
SHNV60-5V-HP9	9/16 (14.29)	0.078 (1.98)	6.37 (161.80)	2.62 (66.55)	2.06 (52.32)	1.31 (33.27)	4.12 (104.65)	0.38 (9.65)	3.36 (85.34)	0.28 (7.11)	1.50 (38.10)

Replaceable Seat Valves

Part No.	Tube OD, in.(mm)	Orifice, in.(mm)	Dimensions, in.(mm)							Thickness, in.(mm)
			D	E	G	H	J	K	L	
SHNV30-6V-HP4	1/4 (6.35)	0.094 (2.39)	5.80 (147.32)	2.00 (50.80)	1.26 (32.00)	2.38 (60.45)	0.38 (9.65)	1.38 (35.05)	0.22 (5.59)	1.00 (25.40)
SHNV30-6V-HP6	3/8 (9.53)	0.125 (3.18)	6.05 (153.67)	2.00 (50.80)	1.26 (32.00)	2.38 (60.45)	0.38 (9.65)	1.38 (35.05)	0.22 (5.59)	1.00 (25.40)
SHNV30-6V-HP9	9/16 (14.29)	0.187 (4.74)	6.45 (163.83)	2.62 (66.55)	1.25 (31.75)	2.44 (61.98)	0.38 (9.65)	1.38 (35.05)	0.28 (7.11)	1.50 (38.10)
SHNV30-6V-HP16	1 (25.4)	0.438 (11.13)	10.56 (268.22)	4.13 (104.90)	2.31 (58.67)	5.12 (130.04)	1.12 (28.44)	2.50 (63.50)	0.56 (14.22)	1.75 (44.45)
SHNV40-6V-HP9	9/16 (14.29)	0.109 (2.76)	6.45 (163.83)	2.62 (66.55)	1.25 (31.75)	2.44 (61.98)	0.38 (9.65)	1.38 (35.05)	0.28 (7.11)	1.50 (38.10)
SHNV60-6V-HP4	1/4 (6.35)	0.062 (1.57)	6.28 (159.51)	2.00 (50.80)	1.31 (33.27)	2.62 (66.55)	0.38 (9.65)	1.38 (35.05)	0.22 (5.59)	1.00 (25.40)
SHNV60-6V-HP6	3/8 (9.53)	0.062 (1.57)	6.52 (165.60)	2.00 (50.80)	1.31 (33.27)	2.62 (66.55)	0.38 (9.65)	1.38 (35.05)	0.22 (5.59)	1.00 (25.40)
SHNV60-6V-HP9	9/16 (14.29)	0.078 (1.98)	6.90 (175.26)	2.62 (66.55)	1.31 (33.27)	2.62 (66.55)	0.38 (9.65)	1.38 (35.05)	0.28 (7.11)	1.50 (38.10)

- Dimensions and Drawings are for reference only and are subject to change without prior notice.
- Unless otherwise specified, all dimensions are in millimeters.
- Sizes, pressure classes, and end connections not listed are available upon request.
- Dimensions shown with nuts finger-tight, where applicable.

High Pressure Check Valves

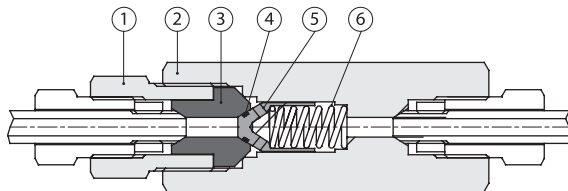
SHPCV60 Series 60,000 psi

Features

- Tubing size available for 1/4" to 9/16".
- Maximum working pressure : 60,000 psig (4137 bar)
- Working temperature :
 - O-ring type : -50°F (-45°C) to 500°F (260°C).
 - Ball type : -110°F (-79°C) to 1200°F (649°C).
- Cracking pressure : 14 psig ~ 26 psig (0.966 bar ~ 1.794 bar).



Materials of Construction



O-Ring Check Valve

No.	Description	Material
1	Insert Gland	SS316 / A479
**2	Body	SS316 / A479
**3	Insert	SS316 / A479
**4	O-Ring	Viton (Standard) / NBR / Kalrez
**5	Poppet	SS316 / A479
**6	Spring	304 Stainless Steel

* Provides unidirectional flow and tight shut-off for liquids and gas with high reliability.
 When differential drops below cracking pressure, valve shuts off. (Not for use as relief valve)
 ** Wetted components

Ball Check Valve

No.	Description	Material
1	Insert Gland	SS316 / A479
**2	Body	SS316 / A479
**3	Insert	SS316 / A479
**4	Ball Poppet	SS316 / A479
**5	Spring	304 Stainless Steel

* Prevents reverse flow where leak-tight shut-off is not mandatory.
 When differential drops below cracking pressure, valve closes. (Not for use as relief valve)
 ** Wetted components

Ordering Information

Example : **SHPCV60 - HP9 - BP - K**

1
2
3

*316 Stainless Steel is Standard Body Material

1. Connection Size & Type

Size (inch)	1/8	1/4	3/8	1/2	9/16	3/4	1
High Pressure C&T	-	HP4	HP6	-	HP9	-	-

2. Poppet Type

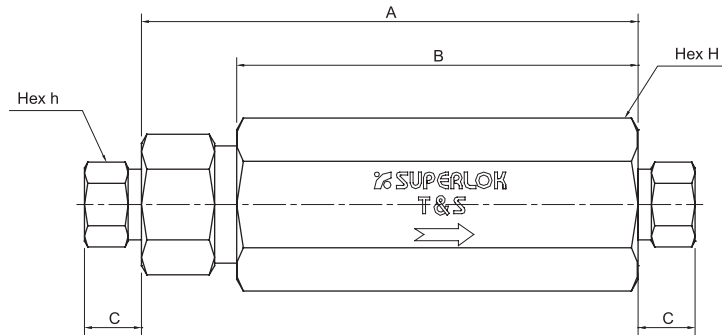
- (Blank)** = O-Ring Check Valve
- BP** = Ball Check Valve

3. O-Ring Material

- (Blank)** = Viton (Standard)
- N** = NBR
- K** = Kalrez

※ For special sizes and configurations, please consult BMT (SUPERLOK) sales representative.

Table of Dimensions



Part No.	Connection	Orifice, in.(mm)	Cv	Dimensions, in. (mm)					Pressure / Temperature Rating @ 100°F (38 °C)
				A	B	C	h	H	
SHPCV60-HP4	HP 1/4"	0.094 (2.4)	0.15	3.38 (85.85)	2.50 (63.5)	0.50 (12.7)	0.63 (16)	1.18 (30)	60,000 psig (4,137 bar)
SHPCV60-HP6	HP 3/8"	0.125 (3.2)	0.28	3.75 (95.25)	2.62 (66.55)	0.53 (13.5)	0.75 (19.05)	1.18 (30)	
SHPCV60-HP9	HP 9/16"	0.187 (4.75)	0.63	4.62 (117.35)	3.38 (85.85)	0.81 (20.57)	1.12 (28.45)	1.50 (38.1)	

- Dimensions and Drawings are for reference only and are subject to change without prior notice.
- Unless otherwise specified, all dimensions are in millimeters.
- Sizes, pressure classes, and end connections not listed are available upon request.
- Dimensions shown with nuts finger-tight, where applicable.

High Pressure Relief Valves

SHRV60 Series 60,000 psi

Features

- Metal seat relief valves.
- Set pressure : 3,000 to 60,000psig (206.8 to 4136.8 bar).
- Working temperature : -110°F (-79°C) to 500°F (260°C).
- Liquid or gas service. Provide shut-off of liquids and gases under pressure to commercial tightness standards.
- Pressure settings are made at the factory and valves are tagged accordingly.
- Lock wired secure cap to maintain set pressure.
- Easily exchangeable seat.



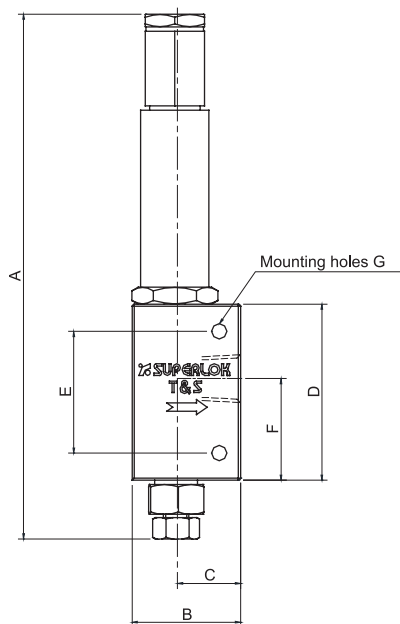
Technical Data

Grade	Inlet		Outlet Connection Type	Orifice Size, In. (mm)	Cv	Pressure Rating, psig (bar) @ 100°F (38 °C)		
	Tube OD	Connection Type				Minimum Set Pressure	Maximum Set Pressure	Maximum Back Pressure
5A	3/8"	HP6	F.NPT 3/4"	0.125 (3.18)	0.2	20,000 (1378.9)	30,000 (2068.4)	500 (34.5)
6A				0.093 (2.36)	0.1	25,000 (1723.7)	45,000 (3102.6)	
7A				0.078 (1.98)	0.07	30,000 (2068.4)	60,000 (4136.8)	

* Maximum system operation pressure should not exceed 90% of relief valve set pressure.

- Dimensions and Drawings are for reference only and are subject to change without prior notice.
- Unless otherwise specified, all dimensions are in millimeters.
- Sizes, pressure classes, and end connections not listed are available upon request.
- Dimensions shown with nuts finger-tight, where applicable.

Table of Dimensions



Dimensions, in. (mm)							
Part No.	A	B	C	D	E	F	G
SHRV60-HP6-F12N	9.46 (240.4)	2 (50.8)	1.19 (30.2)	3.25 (82.6)	2.25 (57.1)	1.94 (49.3)	0.28 (7.1)

• All dimensions are for reference only, subject to change.

Ordering Information

Example :

SHRV60 - HP6 - F12N - 3A

1
2
3

*316 Stainless Steel is Standard Body Material

1. Inlet Tube O.D

□ HP6 = High Pressure 3/8"

2. Outlet Connection Size

□ F12N = Female 3/4" NPT

3. Grade (Set Pressure)

5A	20,000 ~ 30,000 psig
6A	25,000 ~ 45,000 psig
7A	30,000 ~ 60,000 psig

BMT Co., Ltd.

Headquarters

(46031) 부산시 기장군 장안읍 신소재산단2로 17 (반룡리)

17, Sinsojaesandan 2-ro, Jangan-eup, Gijang-gun, Busan, 46031 South Korea

TEL: +82 51 780 5000 FAX: +82 51 780 5100

E-mail: superlok@superlok.com

WEB: www.superlok.com

Fittings & Valves

Industrial

Instrumentation Tube Fittings

i-Fitting®

Ball/Plug Valves

Double Block & Bleed Valves

Manifold/Gauge Valves

Globe/Needle Valves

Cryogenic Valves

Check/Relief/Excess Flow Valves

Medium/High Pressure Fittings & Valves

Eco-fuel Conversion and Supply Units

Ultra High Purity

HGS® (High-integrated Gas System)

Weld & Metal Face Seal Fittings

Bend Fittings

Diaphragm Valves

Bellows Valves

Check Valves

Clean Ball Valves

Regulators

Gas Filters

HGS® : Trademark registered in Republic of Korea (as of April 2024)

Electric & Energy

Metal Clad Switchgear (MCSG)

Compact Switchboard

Motor Control Center (MCC)

Smart Distribution Board

Energy Management System (EMS)