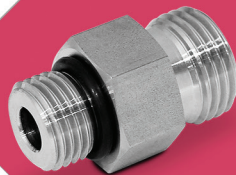
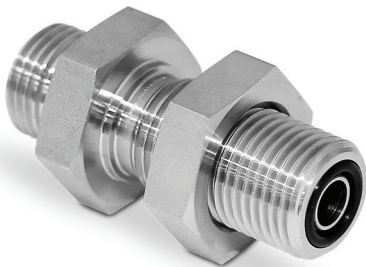
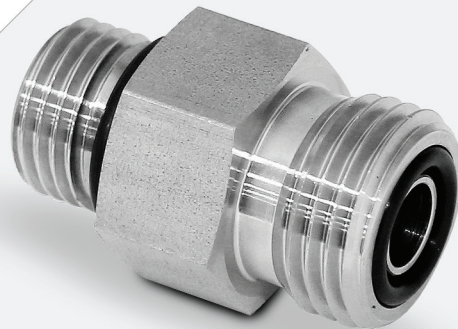

O-Ring Face Seal Fittings



O-Ring Face Seal Fittings

Features

Superlok O-ring Face Seal Fittings are designed for rapid assembly in pipe, tube and welded systems.

- Unique design allows easy installation where space is limited.
- No axial clearance is required.
- Sealing is accomplished with a captive O-ring in the body component.
- Assemblies can be used from high pressure to critical vacuum within a wide range of temperatures (up to 550°F).

O-ring Material

70 durometer fluorocarbon(viton) is standard on fitting bodies.

90 durometer fluorocarbon is used with SAE/MS threads.

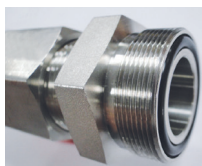
Perfluoroelastomer, BUNA-N , TFE , Ethylene-propylene are available for special applications

Component	Material
Bodies, glands, nuts	316 Stainless Steel
Automatic tube weld fittings	316L Stainless Steel
O-ring, Bodies	Fluorocarbon FKM
O-ring, SAE/MS threads	Fluorocarbon FKM
Lubricant	Silicone-based

Testing

The O-ring Face Seal Fittings design has been helium leak tested to a maximum leak of 4×10^{-9} std cm³/s.

Installation Instructions



Install Body to existing port, tubing or equipment



Assemble Body with female nut and gland. And Tighten nut 1/8 turn with a wrench after finger tight to make sure metal to metal contact.

* When body or gland needs soldering, welding or brazing, the O-ring should be removed to prevent possible damage.

O-ring Uniform Size Number

VCO size (in.)	O-Ring Uniform Size Number
1/8 and 1/4	I.D 6.07 X 1.78T
3/8 and 1/2	I.D 10.77 X 2.62T
3/4	I.D 18.72 X 2.62T
1	I.D 26.57 X 3.53T

SAE/MS Thread Size	O-Ring Uniform Size Number
7/16-20	I.D 8.92 X 1.83T
9/16-18	I.D 11.89 X 1.98T
3/4-16	I.D 16.36 X 2.20T
1 1/16-12	I.D 23.47 X 2.95T
1 5/16-12	I.D 29.47 X 2.95T

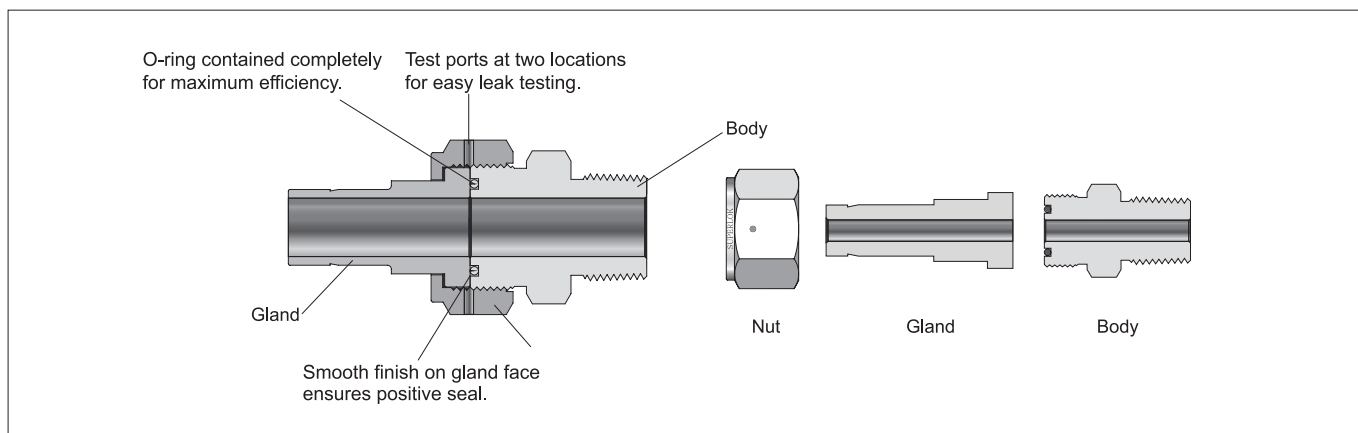
Pressure Ratings

All ratings comply with calculations in accordance with ASME Code for Pressure Piping B31.3 (Process Piping) and Asme B31.1 (Power Piping).

Temperature Ratings

Temperature ratings for O-ring Face Seal fittings are determined by the O-ring materials.

Material	Max. Temperature Rating F (°C)
Fluorocarbon FKM	400(204)
Buna N	250(121)
PTFE	450(232)
Perfluoroelastomer	550(287)
Ethylene propylene	300(148)



Ordering Information

Example 1:	O	M C	-	4	-	4 N	-	N	-	3 6 L
		<u>1</u>		<u>2-1</u>		<u>2-3</u>		<u>3</u>		<u>4</u>

Example 2:	O	C	-	4	-	2
		<u>1</u>		<u>2-1</u>		<u>2-2</u>

1. Type of Fitting

- | | | |
|--|--|---|
| <input type="checkbox"/> FN = Female Nut | <input type="checkbox"/> GSMC = Swivel Male Connector | <input type="checkbox"/> BHC = Tube Fitting Bulkhead Connector |
| <input type="checkbox"/> BN = Blind Nut | <input type="checkbox"/> GSFC = Swivel Female Connector | <input type="checkbox"/> TE = Tube Fitting Elbow |
| <input type="checkbox"/> GSW = Tube Socket Weld Gland | <input type="checkbox"/> U = Union | <input type="checkbox"/> WC = Socket Weld Connector |
| <input type="checkbox"/> GSWR = Tube Socket Weld Reducing Gland | <input type="checkbox"/> BHU = Bulkhead Union | <input type="checkbox"/> AWC = Automatic Tube Weld Connector |
| <input type="checkbox"/> GMW = Male Tube Weld Gland | <input type="checkbox"/> RU = Reducing Union | <input type="checkbox"/> MC = Male NPT Connector |
| <input type="checkbox"/> GAW = Automatic Tube Weld Gland | <input type="checkbox"/> E = Elbow | <input type="checkbox"/> FC = Female NPT Connector |
| <input type="checkbox"/> GSU = Swivel Union | <input type="checkbox"/> T = Tee | <input type="checkbox"/> ME = Male Elbow |
| <input type="checkbox"/> GSC = Swivel Tube Fitting Connector | <input type="checkbox"/> B = Blind | <input type="checkbox"/> SMC = Male SAE/MS Connector |
| <input type="checkbox"/> GA = Tube Adapter | <input type="checkbox"/> C = Tube Fitting Connector | <input type="checkbox"/> SPE = Male SAE/MS Positionable Elbow |

2. Size of Fitting

2-1. VCO Size

Size (inch)	1/4	3/8	1/2	3/4	1
Designator	4	6	8	12	16

2-2. Tube OD

OD (inch)	1/4	3/8	1/2	3/4	1
Designator	4	6	8	12	16

2-3. Pipe Thread Size or Tube Size

Size (inch)	1/8	1/4	3/8	1/2	3/4	1	Applicable Standards
NPT	2N	4N	6N	8N	12N	16N	ANSI B1.20.1
ISO Tapered	2R	4R	6R	8R	12R	16R	JIS B0203(PT), DIN2999, BSPT
ISO Parallel	2G	4G	6G	8G	12G	16G	JIS B0202(PF), ISO 228/1, BSPP
Unified Screw	2U	4U	6U	8U	12U	16U	AMERICAN STANDARD UNIFIED SCREW THREAD

3. O-ring Material

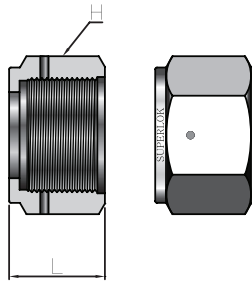
- (Blank)** = VITON
- N** = Buna N
- PT** = PTFE
- EP** = Ethylene propylene

4. Material

- (Blank)** = 316 Stainless Steel
- 36L** = 316L Stainless Steel

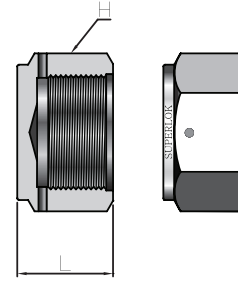
NUTS

Female Nut



Part No.	Size (inch)	H (HEX)	L
OFN-4	1/8 and 1/4	11/16	16.8
OFN-8	3/8 and 1/2	1	17.5
OFN-12	3/4	1-1/2	20.6
OFN-16	1	1-3/4	20.6

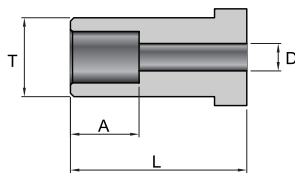
Blind Nut



Part No.	Size (inch)	H (HEX)	L
OBN-4	1/8 and 1/4	11/16	11.2
OBN-8	3/8 and 1/2	1	14.2
OBN-12	3/4	1-1/2	19.1
OBN-16	1	1-3/4	20.6

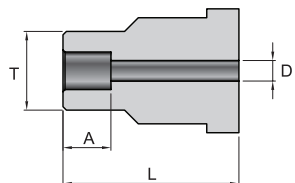
GLANDS

Tube Socket Weld Gland



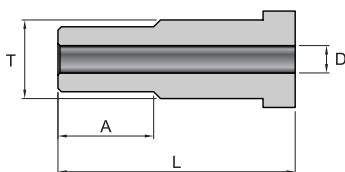
Part No.	Size (inch)	Tube size (inch)	L	A	D	T	Working pressure psig (bar)
OGSW-2-2	1/8	1/8	19.6	2.5	2.3	9.7	15400 (1060)
OGSW-4-4	1/4	1/4	19.6	7.1	4.6	9.7	6800 (460)
OGSW-6-6	3/8	3/8	20.6	7.9	7.1	15.2	8100 (560)
OGSW-8-8	1/2	1/2	20.6	9.7	10.2	15.2	3000 (200)
OGSW-12-12	3/4	3/4	23.9	11.2	15.7	23.4	3700 (250)
OGSW-16-16	1	1	24.9	15.7	22.1	30.2	3000 (200)

Tube Socket Weld Reducing Gland



Part No.	Size (inch)	Tube size (inch)	L	A	D	T	Working pressure psig (bar)
OGSWR-2-2	1/4	1/8	19.6	2.5	2.3	7.4	12600 (860)
OGSWR-4-4	1/2	1/4	20.6	7.1	4.6	12.2	10700 (730)

Male Tube Weld Gland

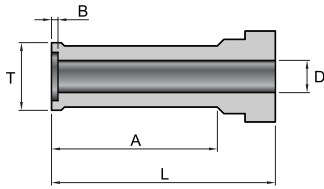


Part No.	Size (inch)	Tube size (inch)	L	A	D	T	Working pressure psig (bar)
OGMW-4-2	1/4	1/8	19.6	7.1	1.5	9.7	11200 (770)
OGMW-4-4	1/4	1/4	28.4	10.4	3.0	9.7	11200 (770)
OGMW-8-4	1/2	1/4	23.1	10.4	3.0	15.2	11200 (770)
OGMW-8-6	1/2	3/8	21.3	10.4	5.8	15.2	8200 (560)
OGMW-8-8	1/2	1/2	26.9	12.7	8.4	15.2	7500 (510)

- Dimensions and Drawings are for reference only and are subject to change without prior notice.
- Unless otherwise specified, all dimensions are in millimeters.
- Sizes, pressure classes, and end connections not listed are available upon request.
- Dimensions shown with SUPERLOK nuts finger-tight, where applicable.

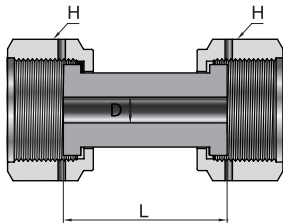
GLANDS

Automatic Tube Weld Gland



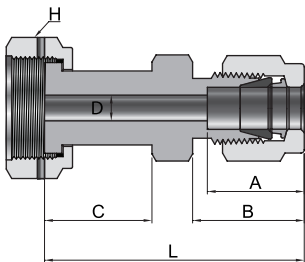
Part No.	Size (inch)	Tube size (inch)	L	A	B	D	T	Wall Thickness	Working pressure psig (bar)
OGAW-4-4	1/4	1/4	28.4	19.8	0.51	4.6	7.4	0.9	5100 (350)
OGAW-8-6	1/2	3/8	28.7	20.0	0.76	7.9	10.4	0.9	3300 (220)
OGAW-8-8	1/2	1/2	29.0	20.3	1.0	10.2	14.0	1.2	3500 (240)
OGAW-12-12	3/4	3/4	30.5	20.3	1.0	16.5	20.3	1.2	2100 (150)
OGAW-16-16	1	1	35.8	25.4	1.0	22.1	26.9	1.7	2100 (150)

Swivel Union



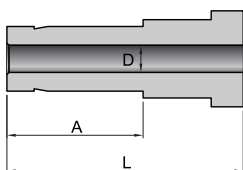
Part No.	Size (inch)	H (HEX)	L	D	Working pressure psig (bar)
OGSU-4	1/4	11/16	36.1	4.6	10200 (700)
OGSU-8	1/2	1	40.9	10.2	5800 (390)

Swivel Tube Fitting Connector



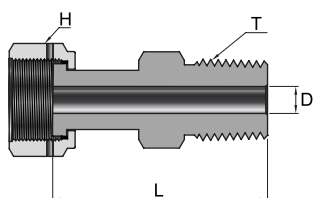
Part No.	Size (inch)	Tube size (inch)	H (HEX)	L	A	B	C	D	Working pressure psig (bar)
OGSC-4-4	1/4	1/4	11/16	44.2	15.2	17.8	19.6	4.6	10200 (700)
OGSC-8-6	1/2	3/8	1	47.5	16.8	19.3	20.6	7.1	5800 (390)
OGSC-8-8	1/2	1/2	1	51.1	22.9	22.1	20.6	10.2	5800 (390)
OGSC-12-12	3/4	3/4	1-1/2	54.4	24.4	22.1	23.9	15.7	4000 (270)
OGSC-16-16	1	1	1-3/4	62.2	31.2	26.4	24.9	22.1	3000 (200)

Tube Adapter



Part No.	Size (inch)	Tube size (inch)	L	A	D	Working pressure psig (bar)
OGA-4-4	1/4	1/4	44.2	15.2	4.6	10200 (700)
OGA-8-6	1/2	3/8	47.5	16.8	7.1	5800 (390)
OGA-8-8	1/2	1/2	51.1	22.9	10.2	5800 (390)
OGA-12-12	3/4	3/4	54.4	24.4	15.7	4000 (270)
OGA-16-16	1	1	62.2	31.2	22.1	3000 (200)

Swivel Male Connector

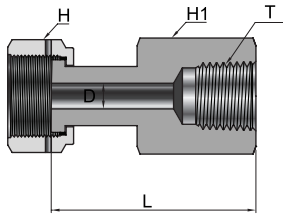


Part No.	Size (inch)	T (NPT size) (inch)	L	D	H (HEX)	Working pressure psig (bar)
OGSMC-4-4N	1/4	1/4	40.4	4.6	11/16	9800 (670)
OGSMC-8-6N	1/2	3/8	42.4	10.2	1	5600 (380)
OGSMC-8-8N	1/2	1/2	47.5	10.2	1	5600 (380)
OGSMC-12-12N	3/4	3/4	51.6	15.7	1-1/2	3900 (260)
OGSMC-16-16N	1	1	59.9	22.1	1-3/4	2900 (190)

- Dimensions and Drawings are for reference only and are subject to change without prior notice.
- Unless otherwise specified, all dimensions are in millimeters.
- Sizes, pressure classes, and end connections not listed are available upon request.
- Dimensions shown with SUPERLOK nuts finger-tight, where applicable.

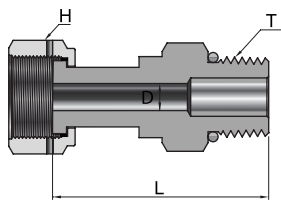
GLANDS

Swivel Female Connector



Part No.	Size (inch)	T (NPT size) (inch)	L	D	H (HEX)	H1 (HEX)	Working pressure psig (bar)
OGSFC-4-4N	1/4	3/8	39.9	4.6	11/16	3/4	9800 (670)
OGSFC-8-6N	1/2	1/2	43.9	10.2	1	7/8	5600 (380)
OGSFC-8-8N	1/2	3/4	49.8	10.2	1	1-1/16	5600 (380)
OGSFC-12-12N	3/4	1	53.8	15.7	1-1/2	1-5/16	3900 (260)
OGSFC-16-16N	1	62.2	58.2	22.1	1-3/4	1-5/8	2900 (190)

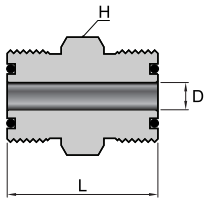
Swivel SAE/MS Connector



Part No.	Size (inch)	T (NPT size) (inch)	L	D	H (HEX)	Working pressure psig (bar)
OGSMC-4-4U	1/4	7/16-20	39.1	4.6	11/16	4500 (310)
OGSMC-8-6U	1/2	9/16-18	41.7	10.2	1	4500 (310)
OGSMC-8-6U	1/2	3/4-16	43.4	10.2	1	4500 (310)
OGSMC-12-12U	3/4	1-1/16-12	52.6	15.7	1-1/2	3600 (240)
OGSMC-16-16U	1	1-5/16-12	55.1	22.1	1-3/4	2900 (190)

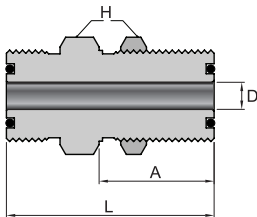
BODIES

Union



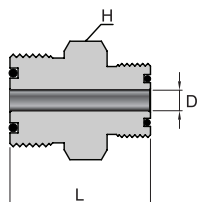
Part No.	Size (inch)	H (HEX)	L	D	Working pressure psig (bar)
OU-4	1/4	5/8	31.8	4.6	14300 (980)
OU-8	1/2	15/16	38.1	10.2	11100 (760)

Bulkhead Union



Part No.	Size (inch)	L	A	D	H (HEX)	Panel Drill Size	Max Panel Thickness	Working pressure psig (bar)
OBHU-4	1/4	47.8	26.9	4.6	3/4	14.7	9.1	14300 (980)
OBHU-8	1/2	53.1	30.2	10.2	1-1/16	22.6	10.2	11100 (760)

Reducing Union

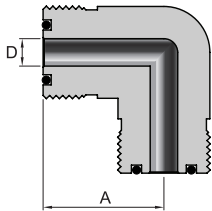


Part No.	Size (inch)	H (HEX)	L	D	Working pressure psig (bar)
ORU-8-4	1/2x1/4	15/16	36.3	4.6	11100 (760)

- Dimensions and Drawings are for reference only and are subject to change without prior notice.
- Unless otherwise specified, all dimensions are in millimeters.
- Sizes, pressure classes, and end connections not listed are available upon request.
- Dimensions shown with SUPERLOK nuts finger-tight, where applicable.

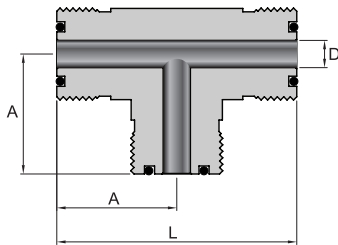
BODIES

Elbow



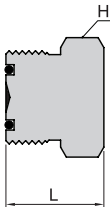
Part No.	Size (inch)	L	D	Working pressure psig (bar)
OE-4	1/4	24.4	4.6	14300 (980)
OE-8	1/2	32.0	10.2	11100 (760)
OE-12	3/4	37.6	15.7	10900 (750)
OE-16	1	39.6	22.1	8800 (600)

Tee



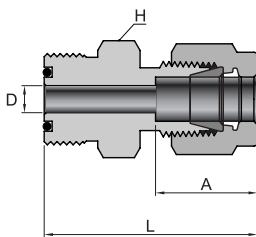
Part No.	Size (inch)	L	A	D	Working pressure psig (bar)
OT-4	1/4	48.8	24.4	4.6	14300 (980)
OT-8	1/2	64.0	32.0	10.2	11100 (760)
OT-12	3/4	75.2	37.6	15.7	10900 (750)
OT-16	1	79.2	39.6	22.1	8800 (600)

Blind



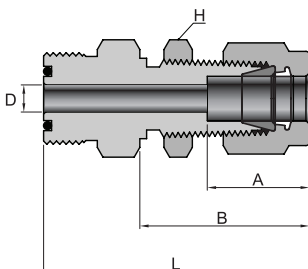
Part No.	Size (inch)	L	H (HEX)
OB-4	1/4	19.6	5/8
OB-8	1/2	22.6	15/16
OB-12	3/4	25.1	1-5/16
OB-16	1	25.9	1-5/8

Tube Fitting Connector



Part No.	Size (inch)	T (NPT size) (inch)	L	A	D	H (HEX)	Working pressure psig (bar)
OC-4-2	1/4	1/8	35.1	13.0	2.3	5/8	10900 (750)
OC-4-4	1/4	1/4	37.3	15.2	4.6	5/8	10200 (700)
OC-8-6	1/2	3/8	41.9	16.8	7.1	15/16	6500 (440)
OC-8-8	1/2	1/2	45.2	22.9	10.2	15/16	6700 (460)
OC-12-12	3/4	3/4	47.2	24.4	15.7	1-5/16	5800 (580)
OC-16-16	1	1	52.3	31.2	22.1	1-5/8	4700 (320)

Tube Fitting Bulkhead Connector

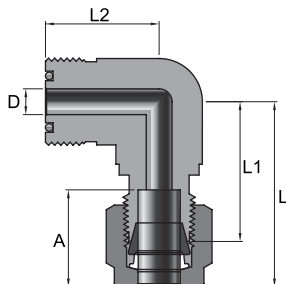


Part No.	Size (inch)	Tube size (inch)	L	A	B	D	H (HEX)	Panel Drill Size	Max Panel Thickness	Working pressure psig (bar)
OBHC-4-4N	1/4	1/4	53.3	15.2	33.5	4.6	5/8	11.5	10.2	10200 (700)
OBHC-8-6N	1/2	3/8	59.4	16.8	36.8	7.1	15/16	14.7	11.2	6500 (440)
OBHC-8-8N	1/2	1/2	64.8	22.9	41.9	10.2	15/16	19.4	12.7	6700 (460)
OBHC-12-12N	3/4	3/4	72.6	24.4	47.5	15.7	1-5/16	25.8	16.8	5800 (390)
OBHC-16-16N	1	1	83.6	31.2	57.4	22.1	1-5/8	33.7	19.1	4700 (320)

- Dimensions and Drawings are for reference only and are subject to change without prior notice.
- Unless otherwise specified, all dimensions are in millimeters.
- Sizes, pressure classes, and end connections not listed are available upon request.
- Dimensions shown with SUPERLOK nuts finger-tight, where applicable.

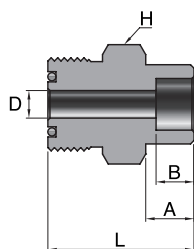
BODIES

Tube Fitting Elbow



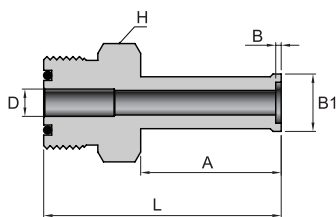
Part No.	Size (inch)	Tube size (inch)	L	L1	L2	A	D	Working pressure psig (bar)
OTE-4-4	1/4	1/4	30.2	22.9	24.4	15.2	4.6	10200 (700)
OTE-8-6	1/2	3/8	35.3	27.9	32.0	16.8	7.1	6500 (440)
OTE-8-8	1/2	1/2	38.1	27.9	32.0	22.9	10.2	6700 (460)
OTE-12-12	3/4	3/4	45.7	35.6	37.6	24.4	15.7	5800 (390)
OTE-16-16	1	1	51.8	39.6	39.6	31.2	22.1	4700 (320)

Socket Weld Connector



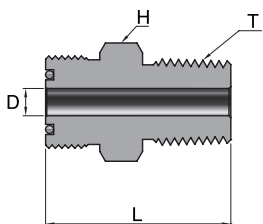
Part No.	Size (inch)	Tube size (inch)	L	A	D	B	H (HEX)	Working pressure psig (bar)
OWC-2-2	1/8	1/8	22.4	2.5	2.3	7.4	5/8	12600 (860)
OWC-4-4	1/4	1/4	27.7	7.1	4.6	9.7	5/8	6800 (460)
OWC-6-6	3/8	3/8	32.5	7.9	7.1	15.2	15/16	8100 (550)
OWC-8-8	1/2	1/2	34.0	9.7	10.2	15.2	15/16	3000 (200)
OWC-12-12	3/4	3/4	38.1	11.2	15.7	23.4	1-5/16	3700 (250)
OWC-16-16	1	1	43.7	15.7	22.1	30.2	1-5/8	3000 (200)

Automatic Tube Weld Connector



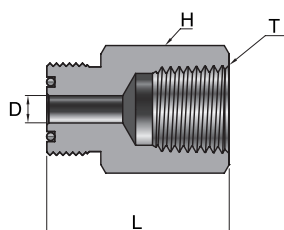
Part No.	Size (inch)	Tube size (inch)	L	A	B	D	B1	H (HEX)	Wall Thickness	Working pressure psig (bar)
OAWC-4-4	1/4	1/4	40.4	19.8	0.51	4.6	7.4	5/8	0.9	5100 (350)
OAWC-8-6	1/2	3/8	44.2	20.0	0.76	7.9	10.4	15/16	0.9	3300 (220)
OAWC-8-8	1/2	1/2	44.4	20.3	1.0	10.2	14.0	15/16	1.2	3500 (240)
OAWC-12-12	3/4	3/4	45.2	20.3	1.0	16.5	20.3	1-5/16	1.2	2200 (150)
OAWC-16-16	1	1	51.6	25.4	1.0	22.1	26.9	1-5/8	1.7	2200 (150)

Male NPT Connector



Part No.	Size (inch)	T (NPT size) (inch)	L	D	H (HEX)	Working pressure psig (bar)
OMC-4-2N	1/4	1/8	29.5	4.6	5/8	10000 (680)
OMC-4-4N	1/4	1/4	34.0	4.6	5/8	13400 (920)
OMC-8-6N	1/2	3/8	37.1	9.7	15/16	7800 (530)
OMC-8-8N	1/2	1/2	41.9	10.2	15/16	10000 (680)
OMC-12-12N	3/4	3/4	44.4	15.7	1-5/16	7300 (500)
OMC-16-16N	1	1	50.0	22.1	1-5/8	5300 (360)

Female NPT Connector

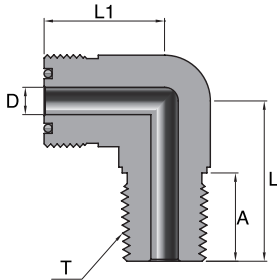


Part No.	Size (inch)	T (NPT size) (inch)	L	D	H (HEX)	Working pressure psig (bar)
OFC-4-2N	1/4	1/8	31.8	4.6	5/8	8400 (570)
OFC-4-4N	1/4	1/4	35.3	4.6	3/4	6600 (450)
OFC-8-6N	1/2	3/8	39.9	10.2	15/16	6600 (450)
OFC-8-8N	1/2	1/2	45.0	10.2	1-1/16	4900 (330)
OFC-12-12N	3/4	3/4	49.0	15.7	1-5/16	4600 (310)
OFC-16-16N	1	1	51.3	22.1	1-5/8	4400 (300)

- Dimensions and Drawings are for reference only and are subject to change without prior notice.
- Unless otherwise specified, all dimensions are in millimeters.
- Sizes, pressure classes, and end connections not listed are available upon request.
- Dimensions shown with SUPERLOK nuts finger-tight, where applicable.

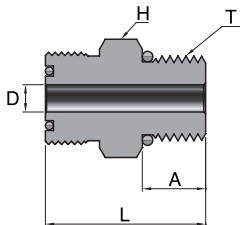
BODIES

Male Elbow



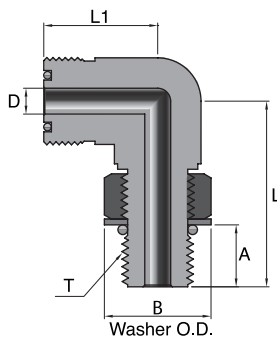
Part No.	Size (inch)	T (NPT size) (inch)	L	L1	A	D	Working pressure psig (bar)
OME-4-2N	1/4	1/8	22.1	24.4	9.7	4.6	10000 (680)
OME-4-4N	1/4	1/4	26.7	24.4	14.2	4.6	8000 (550)
OME-8-6N	1/2	3/8	32.0	32.0	14.2	9.7	7800 (530)
OME-8-8N	1/2	1/2	36.8	32.0	19.1	10.2	7700 (530)
OME-12-12N	3/4	3/4	42.4	37.6	19.1	15.7	7300 (500)
OME-16-16N	1	1	49.3	39.6	23.9	22.1	5300 (360)

Male SAE/MS Connector



Part No.	Size (inch)	T (Straight Thread Size)	L	A	D	H (HEX)	Working pressure psig (bar)
OSMC- 4 - 4U	1/4	7/16-20	31.5	9.1	4.6	11/16	4500 (310)
OSMC- 4 - 6U	1/4	9/16-18	29.7	9.9	4.6	11/16	4500 (310)
OSMC- 8 - 4U	1/2	7/16-20	34.5	9.1	4.6	15/16	4500 (310)
OSMC- 8 - 6U	1/2	9/16-18	35.3	9.9	7.6	15/16	4500 (310)
OSMC- 8 - 8U	1/2	3/4-16	37.3	11.2	10.2	1	4500 (310)
OSMC-12-12U	3/4	1-1/16-12	43.9	15.0	15.7	1-3/8	3600 (240)
OSMC-16-16U	1	1-5/16-12	45.5	15.0	21.6	1-5/8	2900 (190)

Male SAE/MS Positionable Elbow



Part No.	Size (inch)	T (Straight Thread Size)	L	L1	A	B	D	Working pressure psig (bar)
OSPE - 4 - 4U	1/4	7/16-20	30.2	24.4	9.9	16.5	4.6	4500 (310)
OSPE - 8 - 6U	1/2	9/16-18	39.1	33.8	11.2	20.1	7.6	3600 (240)
OSPE - 8 - 8U	1/2	3/4-16	41.9	33.8	12.7	25.7	10.2	3600 (240)
OSPE-12 -12U	3/4	1-1/16-12	54.1	38.9	16.8	36.6	15.7	2900 (190)
OSPE-16 -16U	1	1-5/16-12	58.7	43.7	16.8	43.9	22.1	2300 (150)

- Dimensions and Drawings are for reference only and are subject to change without prior notice.
- Unless otherwise specified, all dimensions are in millimeters.
- Sizes, pressure classes, and end connections not listed are available upon request.
- Dimensions shown with SUPERLOK nuts finger-tight, where applicable.

BMT Co., Ltd.

Headquarters

(46031) 부산시 기장군 장안읍 신소재산단2로 17 (반룡리)

17, Sinsojaesandan 2-ro, Jangan-eup, Gijang-gun, Busan, 46031 South Korea

TEL: +82 51 780 5000 FAX: +82 51 780 5100

E-mail: superlok@superlok.com

WEB: www.superlok.com

Fittings & Valves

Industrial

Instrumentation Tube Fittings

i-Fitting®

Ball/Plug Valves

Double Block & Bleed Valves

Manifold/Gauge Valves

Globe/Needle Valves

Cryogenic Valves

Check/Relief/Excess Flow Valves

Medium/High Pressure Fittings & Valves

Eco-fuel Conversion and Supply Units

Ultra High Purity

HGS® (High-integrated Gas System)

Weld & Metal Face Seal Fittings

Bend Fittings

Diaphragm Valves

Bellows Valves

Check Valves

Clean Ball Valves

Regulators

Gas Filters

HGS® : Trademark registered in Republic of Korea (as of April 2024)

Electric & Energy

Metal Clad Switchgear (MCSG)

Compact Switchboard

Motor Control Center (MCC)

Smart Distribution Board

Energy Management System (EMS)