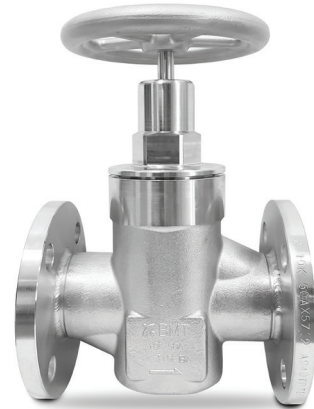


## BV2 Bellows Valves

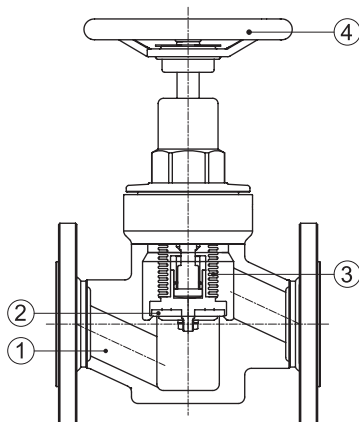
### Low Pressure Manual Bellows Valves (Forged Type)



#### Specifications

Size	15A	1"	20A	25A	32A	40A	2"	50A
Cv Value	2.9	4.1	4.1	6.9	16	16	16	21
Orifice Size	15 mm	19 mm	19 mm	25 mm	40 mm	40 mm	40 mm	45 mm
Max. Working Pressure	10 bar (145 psig)							
Working Temperature	-10 ~ 80°C (14 ~ 176°F)							
Inboard Leak Test Rates (He) (Holding Time ≥ 15 sec.)	≤1x10 <sup>-5</sup> atm.cc/s							
Across the Seat Leak Test Rates (He) (Holding Time ≥ 15 sec.)	≤1x10 <sup>-5</sup> atm.cc/s							
Particle Inspection (EP Only) (0.1µm and Larger)	No Count							
Inner Surface Roughness	AP: Ra ≤ 40 µin, Ra ≤ 1 µm (100A이하) / Ra ≤ 100 µin, Ra ≤ 2.54 µm (125A이상) MP: Ra ≤ 20 µin, Ry ≤ 6 µm BA: Ra ≤ 10 µin, Ry ≤ 3 µm EP: Ra ≤ 5 µin, Ry ≤ 0.7 µm							

#### Material

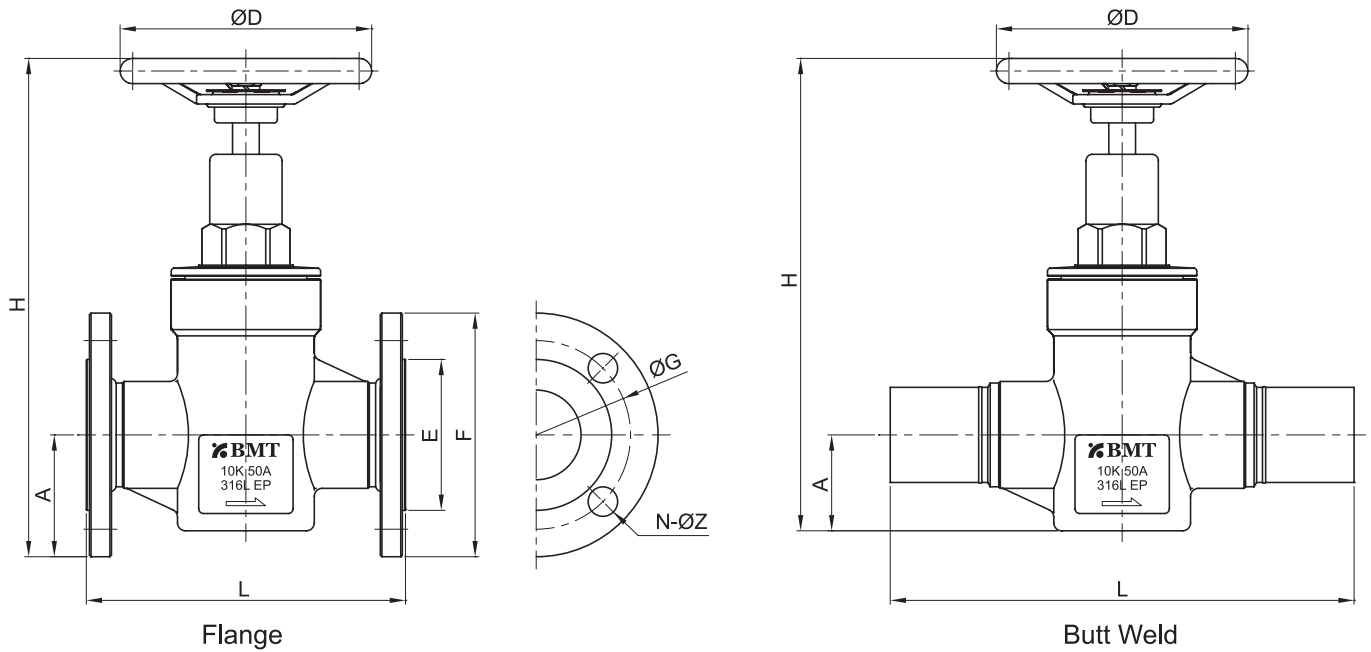


No.	Component	Material
1	Body	316L Stainless Steel
		316L Stainless Steel VAR
		304 Stainless Steel
2	Seat	PTFE (standard)
3	Bellows	316L Stainless Steel
4	Handle	15A~25A: Aluminium / 32A~50A : 304 Stainless Steel

#### NOTE:

- Dimensions and Drawings are for reference only and are subject to change without prior notice.
- Unless otherwise specified, all dimensions are in millimeters.

Dimensions



Flange									
Part No.	L	A	H	D	E	F	G	N	Z
SMBV2-FE15A	108	47.5	151	65	51	95	70	4	15
SMBV2-FE16	117	50	159.5	65	56	100	75	4	15
SMBV2-FE20A	117	50	159.5	65	56	100	75	4	15
SMBV2-FE25A	127	62.5	184	65	67	125	90	4	19
SMBV2-FE32A	165	67.5	256	160	76	135	100	4	19
SMBV2-FE40A	165	70	258	160	81	140	105	4	19
SMBV2-FE32	165	70	258	160	81	140	105	4	19
SMBV2-FE50A	203	77.5	306	160	96	155	120	4	19

Butt Weld				
Part No.	L	A	H	D
SMBV2-TW15A	190	24	127.5	65
SMBV2-TW16	200	28	137.5	65
SMBV2-TW20A	200	28	137.5	65
SMBV2-TW25A	210	33	154.5	65
SMBV2-TW32A	270	51	240	160
SMBV2-TW40A	270	51	240	160
SMBV2-TW32	270	51	240	160
SMBV2-TW50A	295	61	290	160

NOTE:  
 ·Dimensions and Drawings are for reference only and are subject to change without prior notice.  
 ·Unless otherwise specified, all dimensions are in millimeters.

## Ordering Information

Low Pressure Manual Bellows Valves (Forged Type)  
 \*Additional configurations available upon request.

A	BV2	-	B	C	-	D	
SM	BV2	-	FE	32A	-	AP	<div style="display: flex; justify-content: space-between; align-items: center;"> <div style="width: 150px; border-bottom: 1px solid black; margin-bottom: 5px;"></div> <span style="font-size: 0.8em;">Standard feature</span> </div> <div style="width: 150px; border-bottom: 1px solid black; margin-bottom: 5px;"></div> <span style="font-size: 0.8em;">Optional</span>

A	Materials	
SM	316L Stainless Steel	
DM	316L Stainless Steel VAR	
4SS	304 Stainless Steel	

B	Connection Type	
VM	Male BVC (BMT Vacuum Coupling)	
VF	Female BVC (BMT Vacuum Coupling)	
S	SUPERLOK Tube Fitting	
TW	Butt Weld	
VMXVF	In Male-Out Female	
FE	Flange	

D	Wetted Surface Grade	
	BA is standard. No part designator needed.	
P	EP	
MP	MP	
AP	AP	

C	Connection Size				
	ASTM Tube				
	Designator	Nominal Size	Outside Diameter	Wall Thickness	
	16	1 in.	25.4 mm	1.65 mm	
	32	2 in.	50.8 mm	1.65 mm	
	JIS Pipe				
	Designator	Nominal Size	Outside Diameter	Schedule	Wall Thickness
	15A	15A	21.7 mm	SCH 5S	1.65 mm
	15AS			SCH 10S	2.10 mm
	20A	20A	27.2 mm	SCH 5S	1.65 mm
	20AS			SCH 10S	2.10 mm
	25A	25A	34.0 mm	SCH 5S	1.65 mm
	25AS			SCH 10S	2.80 mm
	32A	32A	42.7 mm	SCH 5S	1.65 mm
	32AS			SCH 10S	2.80 mm
	40A	40A	48.6 mm	SCH 5S	1.65 mm
	40AS			SCH 10S	2.80 mm
	50A	50A	60.5 mm	SCH 5S	1.65 mm
	50AS			SCH 10S	2.80 mm

### Part Number Examples

	SMBV2-FE32A		4SSBV2-TW50A-AP	
Material	SM	316L Stainless Steel	4SS	304 Stainless Steel
Series	BV2	BV2 series	BV2	BV2 series
Operation Method		<i>Omit for Manual Valves</i>		<i>Omit for Manual Valves</i>
Connection Type	FE	Flange	TW	Butt Weld
Connection Size	32A	32A	50A	SCH5S, 50A
Seat Material		PTFE (standard)		PTFE (standard)
Grade		BA grade (standard)	AP	AP grade

NOTE:  
 ·Dimensions and Drawings are for reference only and are subject to change without prior notice.  
 ·Unless otherwise specified, all dimensions are in millimeters.