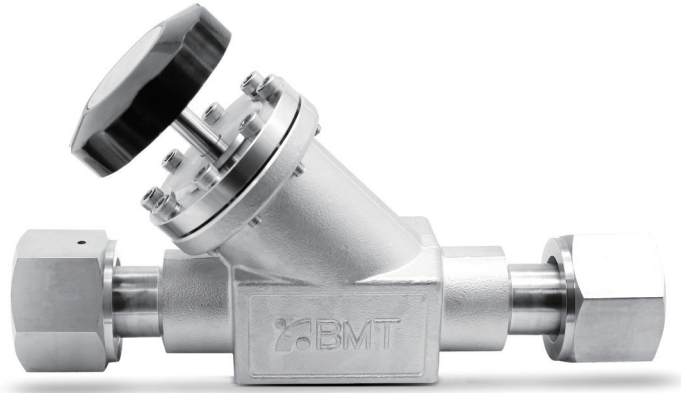


YMBV2 Bellows Valves

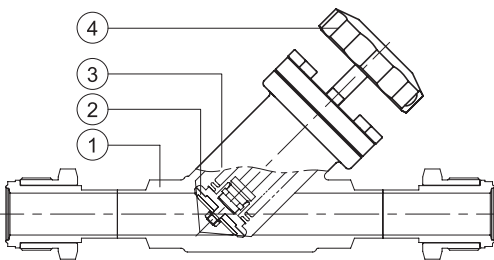
Medium Pressure Manual Bellows Valves (Y Type)



Specifications

Size	1"
Cv Value	20.0
Orifice Size	19 mm
Max. Working Pressure	20 bar (290 psig)
Working Temperature	-10 ~ 80°C (14 ~ 176°F)
Internal Leakage Allowance (He) (Holding Time ≥ 15 sec.)	$\leq 1 \times 10^{-9}$ atm.cc/s
Inboard Leakage Allowance (He) (Holding Time ≥ 15 sec.)	$\leq 1 \times 10^{-9}$ atm.cc/s
Particle Inspection (EP Only) (0.1µm and Larger)	No Count
Inner Surface Roughness	AP: Ra ≤ 40 µin, Ra ≤ 1 µm (100A이하) / Ra ≤ 100 µin, Ra ≤ 2.54 µm (125A이상) MP: Ra ≤ 20 µin, Ry ≤ 6 µm BA: Ra ≤ 10 µin, Ry ≤ 3 µm EP: Ra ≤ 5 µin, Ry ≤ 0.7 µm

Material

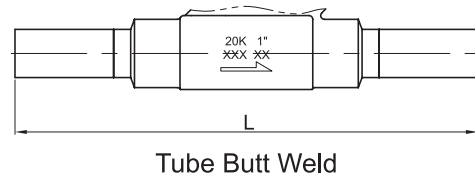
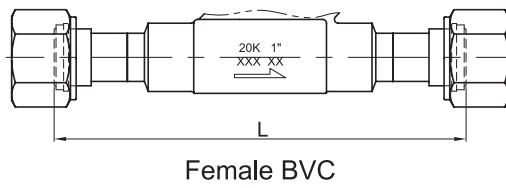
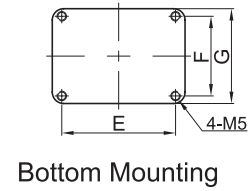
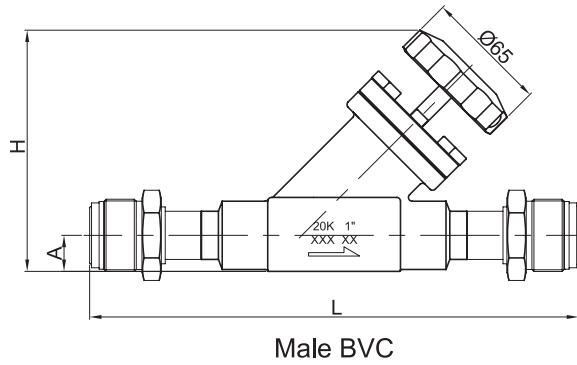


No.	Component	Material
1	Body	316L Stainless Steel 316L Stainless Steel VAR 304 Stainless Steel
2	Seat	PTFE (standard)
3	Bellows	316L Stainless Steel
4	Handle	Aluminium

NOTE:

·Dimensions and Drawings are for reference only and are subject to change without prior notice.
·Unless otherwise specified, all dimensions are in millimeters.

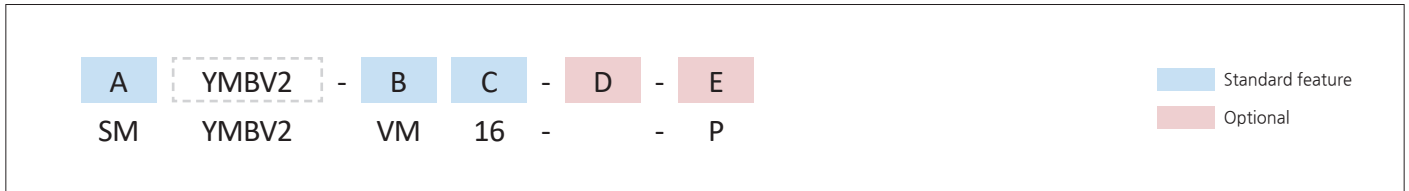
Dimensions



End Connection	Part No.	Dimensions (mm)					
		L	H	A	E	F	G
Male BVC	SMYMBV2-VM16	257.6	124	19	60	42	50
Female BVC	SMYMBV2-VF16	217	124	19	60	42	50
Tube Butt Weld	SMYMBV2-TW16	244	124	19	60	42	50

NOTE:
 ·Dimensions and Drawings are for reference only and are subject to change without prior notice.
 ·Unless otherwise specified, all dimensions are in millimeters.

Ordering Information



A	Materials	
SM	316L Stainless Steel	
DM	316L Stainless Steel VAR	
4SS	304 Stainless Steel	

B	Connection Type	
VM	Male BVC (BMT Vacuum Coupling)	
VF	Female BVC (BMT Vacuum Coupling)	
TW	Butt Weld	

C	Connection Size			
ASTM Tube				
Designator	Nominal Size	Outside Diameter	Wall Thickness	
16	1 in.	25.4 mm	1.65 mm	

D	Seat Material	
PTFE is standard. No part designator needed.		
PC	PCTFE	

E	Wetted Surface Grade	
BA is standard. No part designator needed.		
P	EP	
AP	AP	
MP	MP	

Part Number Examples

	SMYMBV2-VM16		SMYMBV2-TW16-P	
Material	SM	316L Stainless Steel	SM	316L Stainless Steel
Series	YMBV2	YMBV2 series	YMBV2	YMBV2 series
Connection Type	VM	BVC Male	TW	Butt Weld
Connection Size	16	1"	16	1"
Seat Material		PTFE (standard)		PTFE (standard)
Grade		BA grade (standard)	P	EP grade

NOTE:
 ·Dimensions and Drawings are for reference only and are subject to change without prior notice.
 ·Unless otherwise specified, all dimensions are in millimeters.